

LAN Cable Lock Plus (CSK-NC11) User Guide

- Used for locking down cables to RJ45 ports to prevent unauthorized access to your network
- Applicable without plug the using network cable out from server/switch device

1. Components

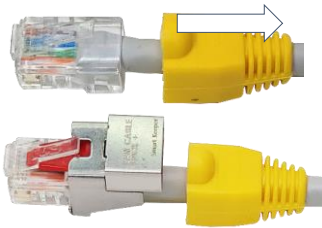


2. Precaution before installation

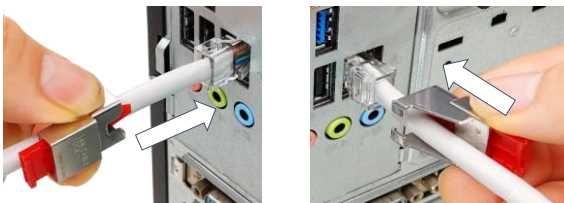
- 1 For non-movable boots: remove the upper portion of boot by using a cutter, then install a LAN Cable Lock Plus.



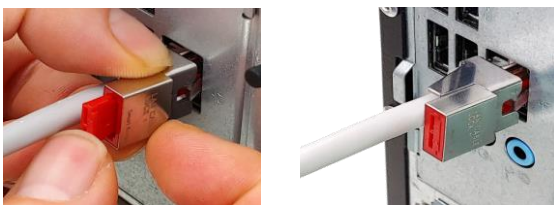
- 2 For movable boots: move it back to clear space, then install a LAN Cable Lock Plus.



3. How to install

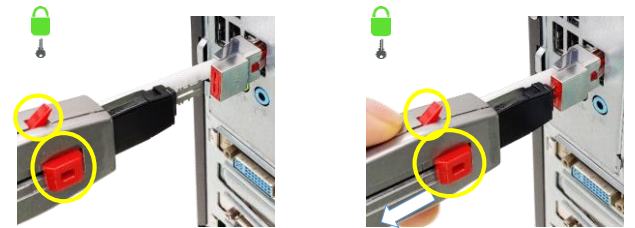
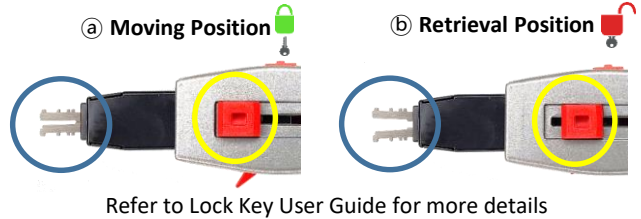


- 1 Insert the Ethernet cable into the LAN Cable Lock Plus (see left above), then move and attach it to the RJ45 connector (see right above).

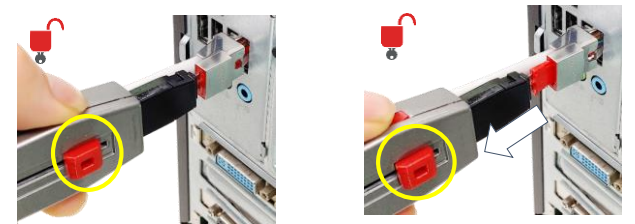


- 2 Lock the LAN Cable Lock Plus by pressing the lock button completely.

4. How to Uninstall (unlock)



- 1 Move Lock key sliding button forward into place: Moving Position. Insert the Lock Key (Note that when the lock key is stuck in the jaws, that is not it. Please insert it further more to be inserted completely)



- 2 After inserting the Lock Key and moving into Retrieval position, pull out the Lock Key with the Lock attached.

5. How to separate from RJ45 connectors



- 1 After unlocking Lan Cable Lock Plus, tilt the lock button forward (1), then pull it back to remove it (2). The bottom of the RJ45 connector is connected to the jaws of the LAN Cable Lock Plus. To separate, pull it down.

