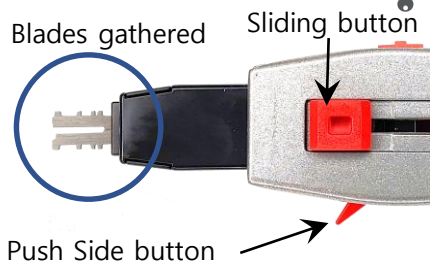


- A physical cybersecurity product that locks one USB device to the USB port so that it cannot be released without a key.

A – Moving Position

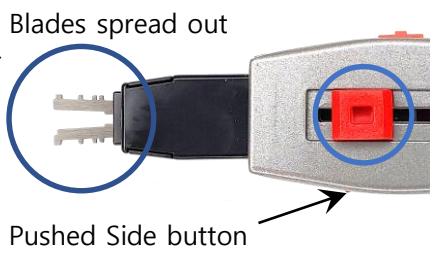


[Universal Lock Key]

Pull Sliding button down
Or Push the side button

Push up Sliding button

B – Retrieval Position



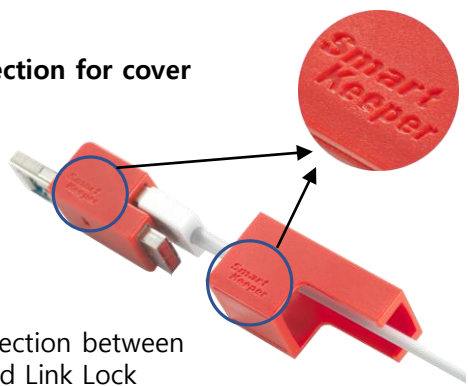
1. Precaution

1) Direction of insertion



The pierced part of USB plug is inserted
Toward the top of the Link Lock

2) Direction for cover

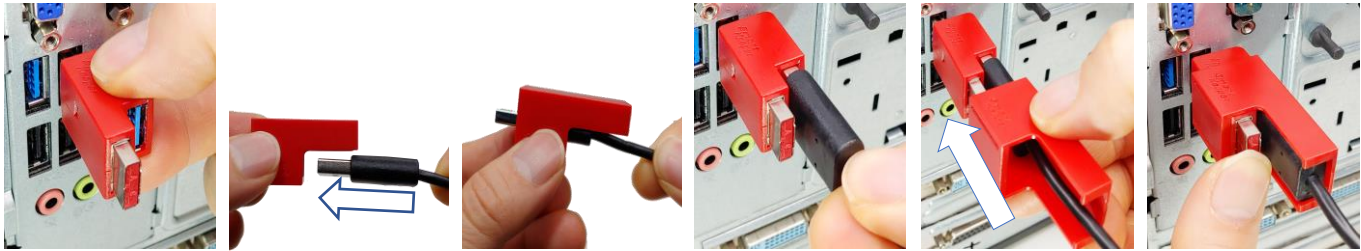


Same direction between
Cover and Link Lock

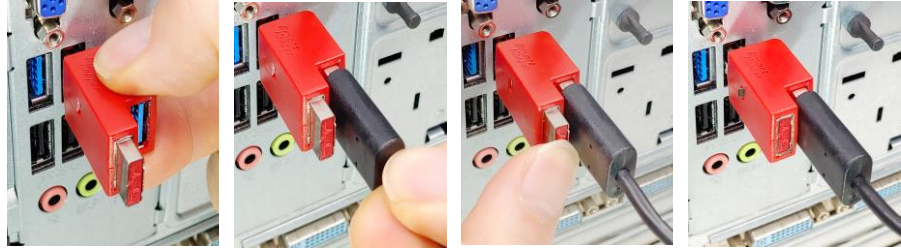
2. Installation

1) With cover

- (1) Insert Link Lock
- (2) Pass the USB cable through the cover
- (3) Insert USB plug
- (4) Put the cover on
- (5) Push lock button



2) Without cover



Without Cover

- Once unplug it is not able to plug in again into Link Lock
- Use without cover in narrow environment.

2. Uninstall(Unlock)

- 1) Insert key
- 2) Change the key mode
- 3) Pull the key out
- 4) Moving position
- 5) Put out cover

