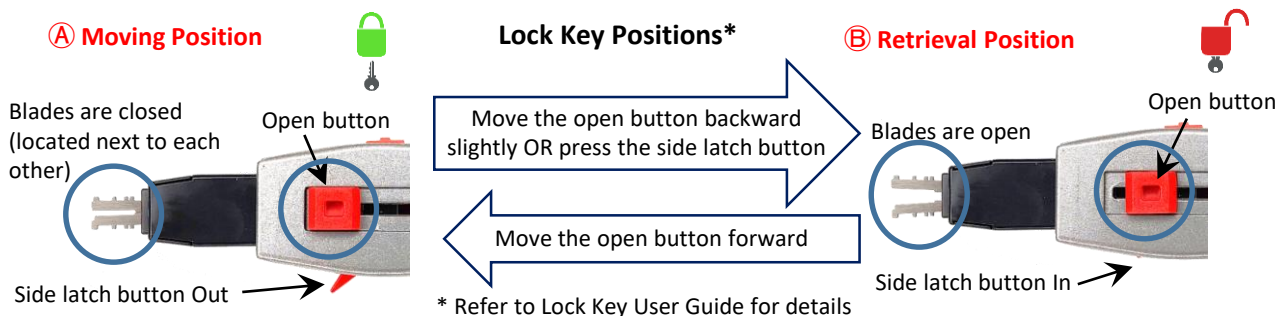


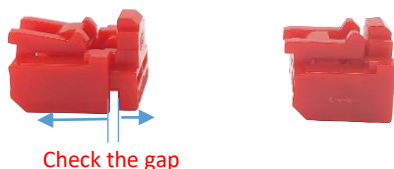
Network Port Lock **Plus** (CSK-NL11) User Guide

- Used for blocking open (unused and empty) network ports (RJ45 ports) to prevent unauthorized use
- Uses the same Professional Lock Key (CSK-U20) as other professional Smart Keeper products



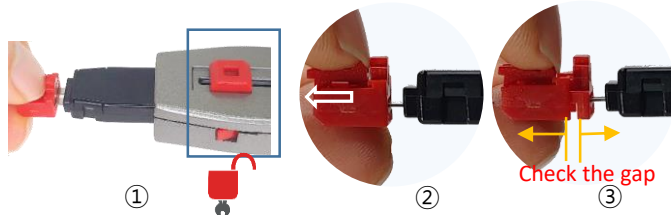
1. Read first before installation

- 1) Before inserting, check the gap
<Open: Ready to insert> <Closed: Not ready>



- It will not be installed properly if in closed position above.
- When removed, it should be in "open position" which is ready to insert

2) How to prepare for open status "Ready to insert" (when it is not)



- Insert the Lock Key into the Network Port Lock Plus and engage as if you are ready to retrieve (fig. ①)
- Next, using the Lock Key, pull the back part out (fig. ②, ③)

2. How to install

Please "Check the gap" first before inserting it to the port

1) By hand

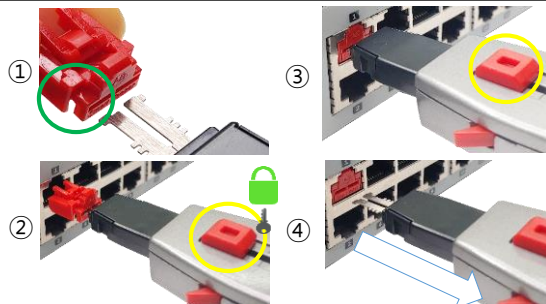


2) By lock key (recommended)

Much easier to install by the lock key

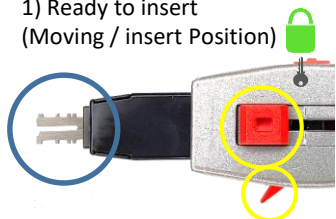
Follow figures on right

- Insert the key with a moving position to the gapped Network Port Lock Plus
- Do not change key positions all the time

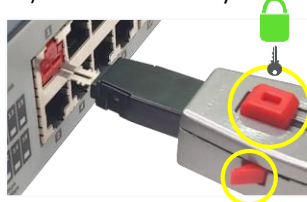


3. How to remove

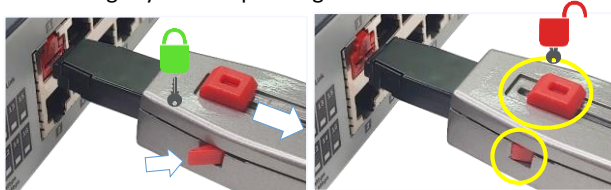
1) Ready to insert (Moving / insert Position)



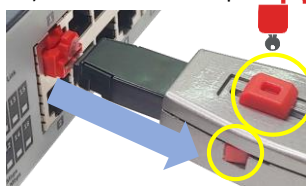
2) Insert the Lock Key



3) Change to retrieval position by either moving the open button slightly back or pressing the side latch button

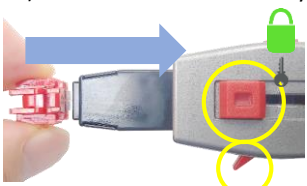


4) Remove from the port



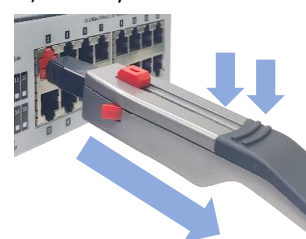
Pull out the Lock Key with the Lock attached

5) Remove from the Lock Key



Disengage the lock key header and remove it

6) For easy removal



Tip: When tight fits, gently pull down the Lock Key for easy removal. Pull up (use reverse way) for the second row where inserted other direction.