

ONE YEAR LIMITED WARRANTY

Product should only be used as directed. Warranty provided for 1 year after purchase. This limited warranty does not cover and Comxi World is not responsible for: Damages caused by misuse, abuse, accidents, fire, theft, disappearance, misplacement, fluctuations and reckless, willful, or intentional conduct. Damages caused by usage that is not in accordance with product instructions or user manuals, failure to follow the product instructions or user manuals



Comxi World, LLC

Glen Allen, Virginia USA **Phone. 1 (804) 299-5234**



Smart Keeper

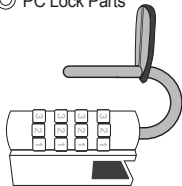
PC LOCK
(COMBINATION VERSION)
USER GUIDE

www.comxiworld.com



1 PC Lock parts and Notice

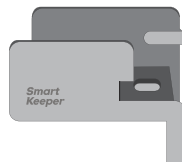
◎ PC Lock Parts



PC Lock Body



Security cable

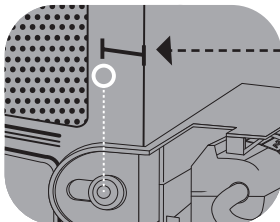


Bracket

◎ Notice

- ① Please read user guide carefully before use
- ② **We are not responsible for lost combination**
(Record your combination in a safe place)
- ③ For PC relocation or theft prevention, Put security cable in the shackle.

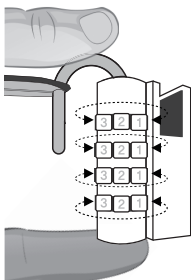
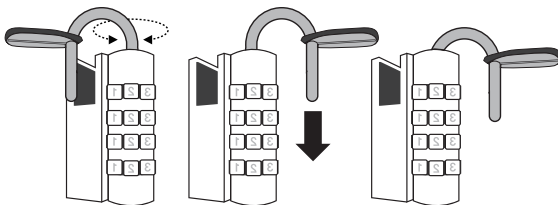
◎ Check for compatibility



Space between screw and edge of the desktop panel must be less than 0.63 inches (16mm) to be PC lock compatible

2 Setting your own combination

- ① Initial default combination is 0-0-0-0
- ② Turn the shackle 180 degrees according to the diagram, then press the shackle in direction of arrow



- ③ Set your new combination with shackle pressed in

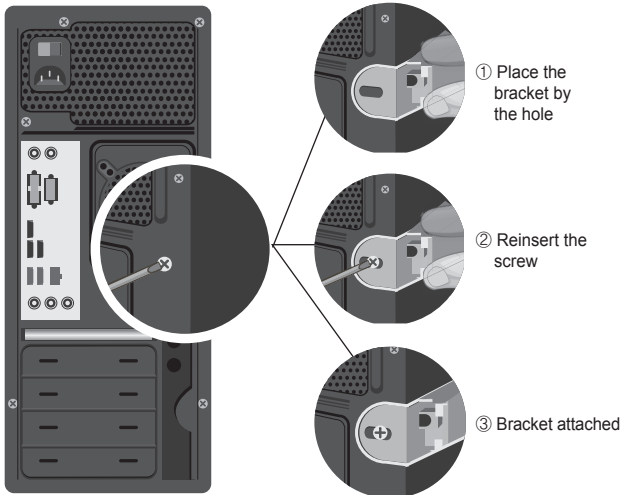
* When changing combination, for easy setup, place the shackle upward (see left)

* Not possible to reset lost combination

3 PC Lock installation and removal

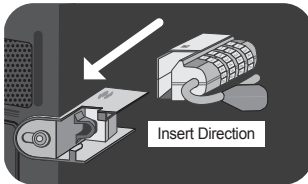
Ⓢ Install bracket

Assign a screw on PC panel to attach PC Lock, remove the screw (see diagram)



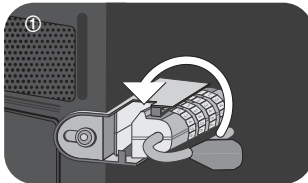
③ Attaching PC Lock into the bracket

Insert PC Lock body into the bracket according to the diagram (see below)



④ Locking PC Lock

Turn the shackle into the PC Lock body and press the shackle in according to the diagram (see below)



⑤ PC Lock removal

To remove PC Lock reverse the installation steps